

coach takes 20 to 25 minutes to reach the terminus from town.

At the top of Capitol Hill, you may return almost immediately on the same bus, but more than likely you'll want to stroll for an hour and catch the next bus. Of course, if you feel energetic, you can walk down the hill to Hastings Street (about 8 blocks) where you can get more frequent service back toward town.

Elapsed time for the trip, without a stopover, is about 1½ hours. The fare is 35¢ return.

Light Industry and New Housing

Are you interested in new light industrial development—and newly-developed housing areas?

Then take a Granville No. 20 coach from downtown to the end of the line at Marpole (leaving downtown between the hour and 15 minutes after). At Marpole board a New Westminster bus at 15 minutes to the hour (except 9.45 a.m. Sunday). This will take you along Marine Drive, past new industrial developments. And you'll be surprised at the growth there. Change at Greenall and Marine to the McKay bus, which runs up to Kingsway through the new Suncrest Subdivision and older areas. En route, you'll see Fairhaven, the United Church home for retired people—a model of its kind. At Kingsway, board a Vancouver Depot bus, which

will take you express along Kingsway and back downtown.

Cost for one person: 28¢ cash. Elapsed time: 1½ hours.

Visitors Welcome on UBC Campus

You need not be a student to enjoy the attractions of the University area.

Simply board a southbound Tenth No. 10 trolley coach downtown, or a southbound Fourth No. 4 and travel to the end of the line. Both terminate at the University Golf Club alongside the gates to the University area.

By taking the No. 10, you'll travel over Granville Bridge, along West Broadway and West 10th Avenue. The No. 4 trolley coach will take you over Granville Bridge, west on 4th Avenue through Kitsilano and on to the terminus.

Then change to the University bus and drive through the golf course, and on past the Memorial Gymnasium and Empire Pool to the UBC campus. There you can walk around the grounds, admire the views and the university buildings as long as you wish. The University bus will return you to the terminus by the University gates, where you can take a trolley coach back downtown, travelling by 4th or 10th Avenue.

Elapsed travel time for this trip is 1½ hours, and the fare is 35¢ return.

Regarding Fares . . .

Except where tickets are mentioned, fares are cash amounts.

In some instances, fares can be reduced by using the appropriate tickets.

Cash amounts are good any day.

The total fare is usually a combination of several "local" fares, and is not usually payable all at once. "Return" fares are not sold. If in doubt, pay the regular "local" fare, then ask the driver how much additional is necessary, or what procedure to follow—or phone KErrisdale 7500 beforehand.

B.C. Building Holds Treasures

Do you sit home on a rainy Sunday afternoon wishing you had a car? And even if you have a car, driving in the rain without somewhere specific to go isn't much fun, is it?

So we suggest that you join the many people who, week after week, enjoy a pleasant and instructive Sunday afternoon in the B.C. Building at Exhibition Park. There you'll see many exhibits of B.C. industries, Indian life and culture, and the great relief map of our province. Conducted tours of the map are made at regular intervals.

In addition, there is a showing of movies at 2:30 p.m. The films deal with various phases of B.C. life or industry, and are often accompanied by a lecture.

No admission is charged. You may stay as long as you

wish, and there is a tea room in the building.

The regular Hastings No. 14 trolley coach will take you there from downtown Vancouver in about 25 minutes. And the bus stop is close to the B.C. Building. Return fare 26¢ cash or two tickets.

Dunbar Heights, Kitsilano Tour

Board a Dunbar No. 7 trolley coach downtown on Hastings Street or Granville. This will take you across the proud, high-level Granville Bridge, through the shopping areas on West Broadway and south on Dunbar to 41st Avenue. There you can transfer to a 41st Crosstown No. 41 coach and proceed east a few blocks to Carnarvon Street to complete your trip.

To return to the city, board a northbound Knight No. 22 bus. Along the way,

from the vicinity of 27th Avenue, there is a spectacular view of the city and the mountains . . . Many say this is the best view of Vancouver . . . And farther on, the route skirts Kitsilano bathing beach. There, too, you'll have a splendid view of English Bay and Stanley Park in the distance. Next comes Burrard Bridge, then the Modern BCE Head Office Building, and soon you are back downtown.

Cost for one person is 26¢ or two city tickets. Elapsed time: Approximately 1 hour.

Phone KE. 7500 for Information

Many of the trips suggested here use the downtown areas as a starting point. This has been done for the convenience of the majority, and in some instances it has added to the length of the trip.

As space does not permit The Buzzer to suggest a trip from each point in Greater Vancouver, we invite you to call our Bus Information Centre at KErrisdale 7500. The information clerks will be happy to suggest a trip to suit your taste and give you full information on travelling times.

Do not hesitate to call our Bus Information Centre at anytime for directions in getting to or from anywhere in the metropolitan area served by the B.C. Electric.

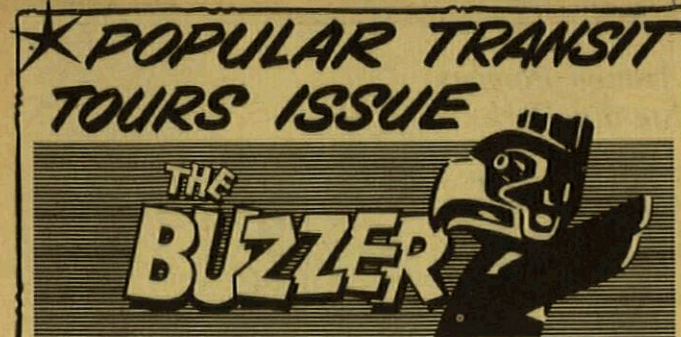
Scenic Stroll in West Point Grey

Do you fancy a pleasant stroll, and an exciting view of English Bay, Stanley Park, West Vancouver and the mountains?

Then board a southbound Fourth Avenue No. 4 trolley coach downtown on Howe Street and travel over Granville Street Bridge, through Kitsilano district and West Point Grey, and on up the hill to 4th Avenue and Blanca.

Alighting there, you are sure to enjoy the view of the water, Stanley Park and the North and West Shores. Then, as you walk north down the hill by any one of several streets, the view will open out in its full magnificence. At the bottom, near the water—a distance of some six blocks—board the inbound Spanish Banks bus that leaves Blanca and Marine Drive at a quarter to and a quarter after the hour. It will take you past Locarno Beach and the Armed Forces Headquarters to 4th Avenue and Alma, where an Oak No. 17 coach will return you downtown. Or by remaining aboard the Spanish Banks bus you can go south to Broadway and Alma, and there transfer to a Hastings No. 14 trolley coach for downtown.

Time for this interesting trip is slightly over an hour, plus the time for your walk. Return fare for one person is 26¢ cash or two tickets.



Published weekly by the British Columbia Electric Railway Company Ltd.

Vol. 43 Vancouver, B.C., Friday, June 6, 1958 No. 23

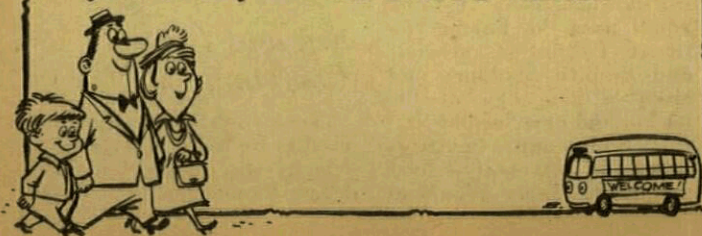
You Are Invited . . .

to join the growing trend to use the regular B.C. Electric bus service for sightseeing.

It is a splendid way for residents and visitors to see the beauties and points of interest around Vancouver, North Vancouver, Burnaby, New Westminster and Richmond.

The cost is nominal, too. For instance, a trip within Vancouver limits can be made for only two city fares . . . A trip over to the North Shore and back, including a "side trip" if you wish, costs only 56¢ per person.

This issue of The Buzzer suggests a number of trips that will delight you, your family and out-of-town visitors.



Around Famous Stanley Park

Don't miss the enjoyment of a bus ride into world-famous Stanley Park with its thousand and one delights of trees, flowers, animals, sea and mountain views.

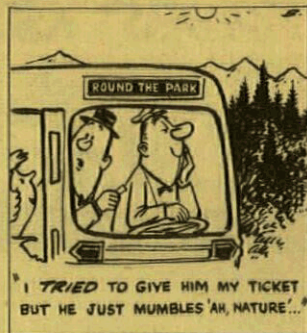
During June, buses leave Stanley Park loop alongside Lost Lagoon, at the west foot of Georgia Street, every hour from 1 p.m. to 7 p.m.; and during July and August buses will leave every half hour from 11 a.m. to 8 p.m.

Regular Vancouver fares are charged, but no transfers are issued. One fare of 13¢ cash or one ticket (4 tickets for 50¢) is good to any of the 13 stops in the park; between any stops, or around the park provided there is no stopover.

* * *

See North Van via Second Narrows

Board a Hastings bus No. 14 downtown on Granville or Hastings at about half past the hour. This will connect you with the Keith-Hastings bus leaving from the end of the Hastings line which travels over Second Narrows Bridge to North Vancouver. En route you'll pass the Pacific National Exhibition grounds and Empire Stadium, and enjoy a fine view of the harbor and new Second Narrows bridge under construction. The bus will deliver you to the Ferry Wharf at



the foot of Lonsdale Avenue in North Vancouver. From there several local trips can be made: to Lynn Valley, to the higher levels on Lonsdale, or to Capilano Canyon.

A direct return from the Ferry Wharf to Vancouver can be made via the North Vancouver Ferry or by Inter-city bus along Marine Drive, over the Lions Gate Bridge, and through beautiful Stanley Park to downtown Vancouver.

The entire trip will take two hours without side trips.

If you make a side trip from the Ferry Wharf, the bus from Lynn Valley will take you directly to Vancouver; the bus from Lonsdale or Capilano will connect you with an Inter-City bus to Vancouver.

* * *

Sea and Land Combination Trip

Not as well known as it used to be is the sightseeing trip by way of the ferry to North Vancouver. Time was

when this was a popular Sunday trip, and the wonder is that more people have not re-discovered it lately.

Be sure to enjoy one or more trips on the North Van vessel during the summer as the ferry service may be discontinued in September.

The ferry leaves the foot of Columbia Street in Vancouver on the hour and every 20 minutes until 6:20 p.m. weekdays and 8:20 p.m. Sundays. The short ride across Burrard Inlet provides you with a panorama view of the city and the mountains that is ever new, ever changing. It is an ocean voyage in miniature. And for those not overly fond of sea breezes, there is a glassed-in saloon from where you can still see the view. The ferry fare is only 10¢ each way.

On the North Shore, buses leave Capilano and Upper Lonsdale.

It's a popular side trip to Lonsdale. Many people ride to the top of the line, then, while admiring the view, they leisurely walk down the hill to 15th Avenue where they take the bus for Vancouver. Others prefer to return on the Ferry.

Fares on the North Shore: Your transfer from Vancouver plus 5¢ will take you anywhere on the North Shore. Returning home by bus, the fare on the Inter-city bus is 25¢. If you board the Inter-city bus at the ferry wharf, naturally your Vancouver transfer has no value.

Lynn Canyon is Restful Retreat

Lynn Canyon Park, high on the North Shore, is one of the many beauty spots reached by B.C. Electric transit—yet it is not too well known.

In downtown Vancouver, board a North Vancouver Inter-City-Lynn Valley bus. It will take you to Peters Road, a short distance from the park. On Sundays and holidays these buses leave Vancouver Bus Depot at 4 minutes to the hour and every 30 minutes. They travel along Georgia Street, through Stanley Park, across Lions Gate Bridge, and through North Vancouver to Lynn Valley. There are many grand views along the way—from the bridge and from high levels in North Vancouver.

At Lynn Canyon Park you are sure to enjoy the view of the canyon from the suspension bridge. You'll find it restful, too, under the big trees. Later, you can refresh yourself at the tea room, open daily during the summer.

Trip each way by bus takes 45 minutes. Cost, including your ride from and to your home in Vancouver, is 58¢ per person.

* * *

CENTRAL PARK

A favorite spot for picnics—or for just a walk in the woods—in Burnaby's natural Central Park. Take Burnaby-Edmonds or Burnaby-Stride bus from Vancouver Bus Depot, Dunsmuir and Cambie.

Little Mountain Popular Attraction

The view from the top of Little Mountain is "out of this world." And just because you don't have a car, or Dad has gone golfing, doesn't mean you can't enjoy it.

Just board a Cambie No. 15 bus on Hastings Street or Granville Street downtown and travel to 33rd Avenue and Cambie. Then a 3 to 4 minute walk will take you to the top of the hill. There you'll enjoy a magnificent view of the city, the mountains, and the harbor. Look down into the sunken gardens, located in an old quarry. Then, at your leisure, walk down the paths to the gardens, and later stroll among the many rare trees in the arboretum in Queen Elizabeth Park.

When you are tired, return to 33rd Avenue and Cambie, and catch a bus back downtown. Or, if you would like a short walk and some variety, walk east



through the park and along 33rd to Main Street. There you can catch a bus going downtown via Main Street.

If you do not start your trip to Little Mountain from a point downtown, the Broadway Crosstown bus will connect you with the Cambie bus.

* * *

Capilano Bridge, Cleveland Dam

The beauties of the Capilano are so well known that it is unnecessary for us to extoll the wonders of the Canyon, the suspension bridge, Cleveland Dam, etc.

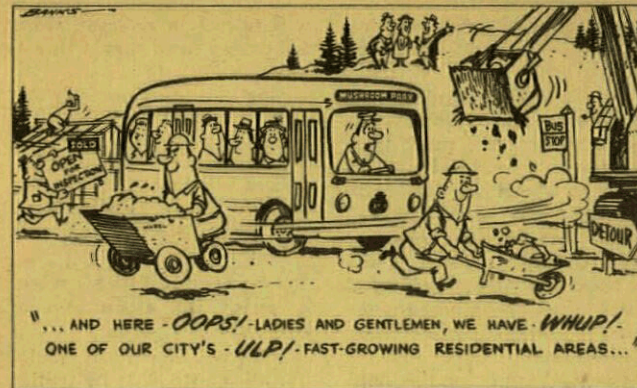
But—did you know they can be reached easily by regular city transit?

On Sundays and holidays during the summer, half hourly service is provided to Cleveland Dam, leaving McKay and Marine on the North Shore, from 12.50 p.m. to 6.20 p.m. For connections board the Inter-City bus leaving the Vancouver Bus Depot at 4 minutes to the hour, or 4 minutes to the half-hour.

You may spend as long as you wish at the scenic area and the dam. The bus leaves the end of the line at 6 minutes and 36 minutes after each hour.

For your pleasure, the tea room by the suspension bridge is open daily from 11 a.m. to 6.30 p.m. during the summer.

Time for the trip each way is approximately 40 minutes.



East Vancouver Circle Tour

An interesting Sunday or holiday circle city tour, especially for residents of the west side of Vancouver and visitors, is by way of Hastings East, Rupert Street and Kingsway.

From downtown, the Hastings No. 14 trolley coach takes you east along Hastings, past the Pacific National Exhibition grounds and Empire Stadium to the terminus at Kootenay. There the Rupert bus will carry you south over Cassiar, Cassiar Diversion, Rupert, Wellington and Joyce to Kingsway. Worthy of note en route is the modern industrial area along Grandview Highway.

At Kingsway a transfer is made to a city-bound Davie No. 8 coach, that will take you down Kingsway to Main and on to mid-town.

Along the way are several fine views of the mountains and the city. This trip will

take slightly over an hour and can be enjoyed at regular city fares. If you wish, you can make the trip in the opposite direction, and it can be started anywhere along these routes.

* * *

Enjoy Grand View from Capitol Hill

Have you seen the view from the top of Capitol Hill in North Burnaby?

On a clear day you can see Point Roberts and Boundary Bay on the south, the Straits of Georgia and Vancouver Island to the west, North Shore mountains, and Mount Baker in the distance in the east.

For this treat take a Hastings No. 14 trolley coach downtown and ride east to the terminus at Hastings and Kootenay, then transfer to a Capitol Hill bus. On Sundays, the Capitol Hill bus leaves the terminus every hour, on the hour. And the Hastings No. 14