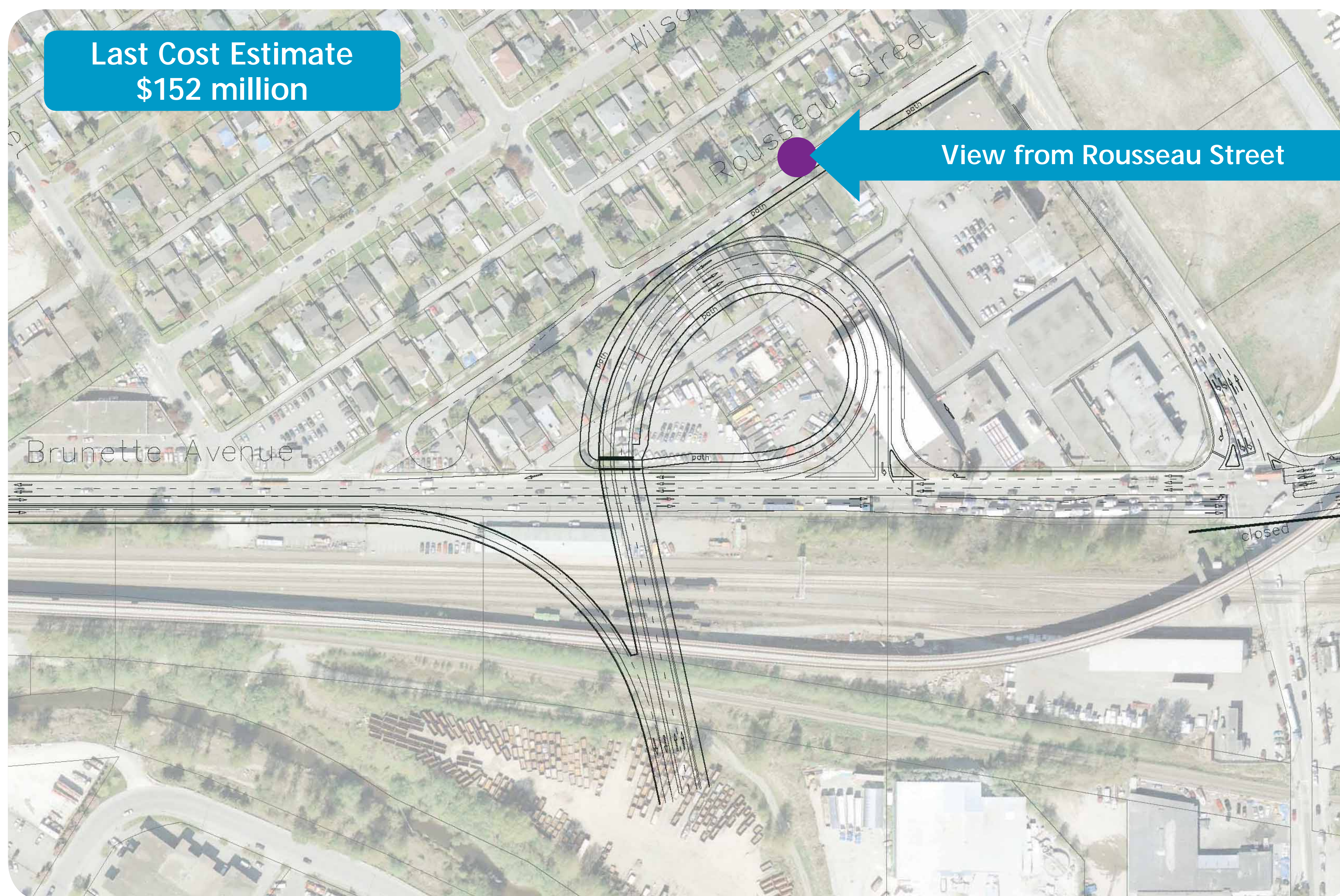


Phase 1: United Boulevard Extension Option D

Key Facts About Option D

- Two ramps
- New intersection on Brunette Avenue
- Bicycle and pedestrian access from Rousseau Street and west side of Brunette Avenue

• Not endorsed by the City of New Westminster Council



Option D: Artist conceptual rendering of new overpass. Landscaping details excluded.